

**APPAREL CERTIFICATE PROGRAM
TEXTILES (AD169) EVALUATION**

Student Name _____ **Date** _____

TURN IN YOUR SWATCHBOOK WITH QUIZES, SAMPLES, NOTES, LAB FIBER IDENTIFICATION PROJECT PLUS ASSIGNMENTS (SEE BELOW).

ITEM	POSSIBLE	POINTS
Midterm quiz	10	
Final quiz	10	
SWATCH BOOK PROJECTS*:		
Assignment 1	10	
Assignment 2	10	
Assignment 3	10	
Assignment 4	10	
Lab Fiber Identification project	20	
Samples and notes complete & organized	10	
Attended all sessions; professionalism	10	

35

***SWATCHBOOK PROJECTS:**

Assignment 1: Relating Fiber Properties to Product Use

Assignment 2: Identifying Fibers by Solubility

Assignment 3: Showing Variety of Types of Fabrics Made of the Same Fiber

Assignment 4: Fabric Store Treasure Hunt

TEXTILES: Assignment 1

Relating Fiber Properties to Product Use

Materials: Set of swatches, pick glass, pick needle, worksheet.

Select the following fabrics: 100% cotton, 100% wool, 100% silk and 100% linen.

Identify a different suitable end use for each fabric (e.g., shirt, dress, jacket, pants). List the major properties that would make it appropriate for the selected end use.

Repeat the procedure for four different manufactured fabrics: 100% nylon, 100% polyester, 100% acrylic, 100% rayon.

Swatch Description	Fabric Content	End Use	Major Reasons

Name: _____

Teacher: _____

Date: _____

TEXTILES: Assignment 2

Identifying Fibers by Solubility

Materials: Set of swatches, acetone, chlorine bleach, pick glass, pick needle, scissors, two glass containers, worksheet.

Use scissors and pick needle to separate fibers from the fabrics given you.

Place a small amount of the fiber into each of the two glass containers. Identify one container as bleach and the second container as acetone. Pour fresh bleach into the container until the fibers are entirely covered. Cover the fiber in the remaining glass with acetone. Allow the specimens to stand at room temperature for 5 minutes. Periodically move the fibers in the liquid with a thin glass rod.

After 5 minutes, inspect the glass containing acetone. On the worksheet, record whether or not the fiber dissolved.

After 20 minutes, inspect the glass containing bleach. On the worksheet, record whether or not the fiber dissolved.

NOTE: Students could test different fibers and share the results.

Swatch Description	Fabric Content	Dissolved (yes or no)		Other Observations
		Acetone	Bleach	
	Acetate			
	Wool			
	Silk			
	Cotton			
	Acrylic			
	Nylon			
	Polyester			
	Rayon			

Name:	Teacher:	Date:
-------	----------	-------

TEXTILES: Assignment 3

Showing Variety of Types of Fabrics Made of the Same Fiber

Materials: Set of swatches, pick glass, pick needle, worksheet.

Select two fabrics made of the same fiber (e.g., 100% cotton). Compare the fabrics by touch and observation. Complete the following information:

1. Hand (the way it feels)
2. Appearance (e.g., luster, surface, color, design)
3. Weight (light, medium, heavy)
4. Other characteristics

Repeat the procedure with fabrics made of other fibers (e.g., 100% polyester).

Note: 1. The fabric differences are the effects of the other aspects of the fabric, such as yarn type, construction (e.g., weave), color and finish. 2. Repeat this experiment at the end of the course. Notice the differences in your use of terminology and amount of detail in describing the fabrics.

Swatch Description	Fiber Content	Hand	Appearance	Weight	Other

Name:	Teacher:	Date:
-------	----------	-------

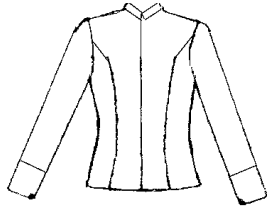
TEXTILES: Assignment 4

Fabric Store Treasure Hunt

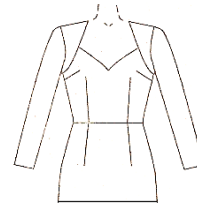
First, locate these specific fabrics and suggest a use:

__ Organdy	__ Flannel	__ Tricot	__ Batiste
__ Damask	__ Doubleknit	__ Poplin	__ Jersey

Now find an ideal fabric for each one of these projects and explain what makes the fabric ideal:



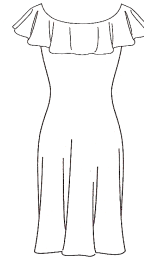
Tailored Jacket _____



Dance Leotard _____



Knit Dress _____



Ruffled Dress _____



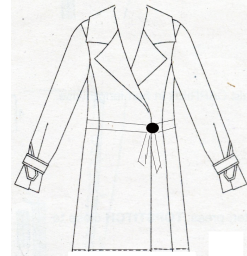
Pencil Skirt _____



Peasant Blouse _____



Tote Bag _____



Winter Coat _____

50 possible points

_____ **TOTAL**