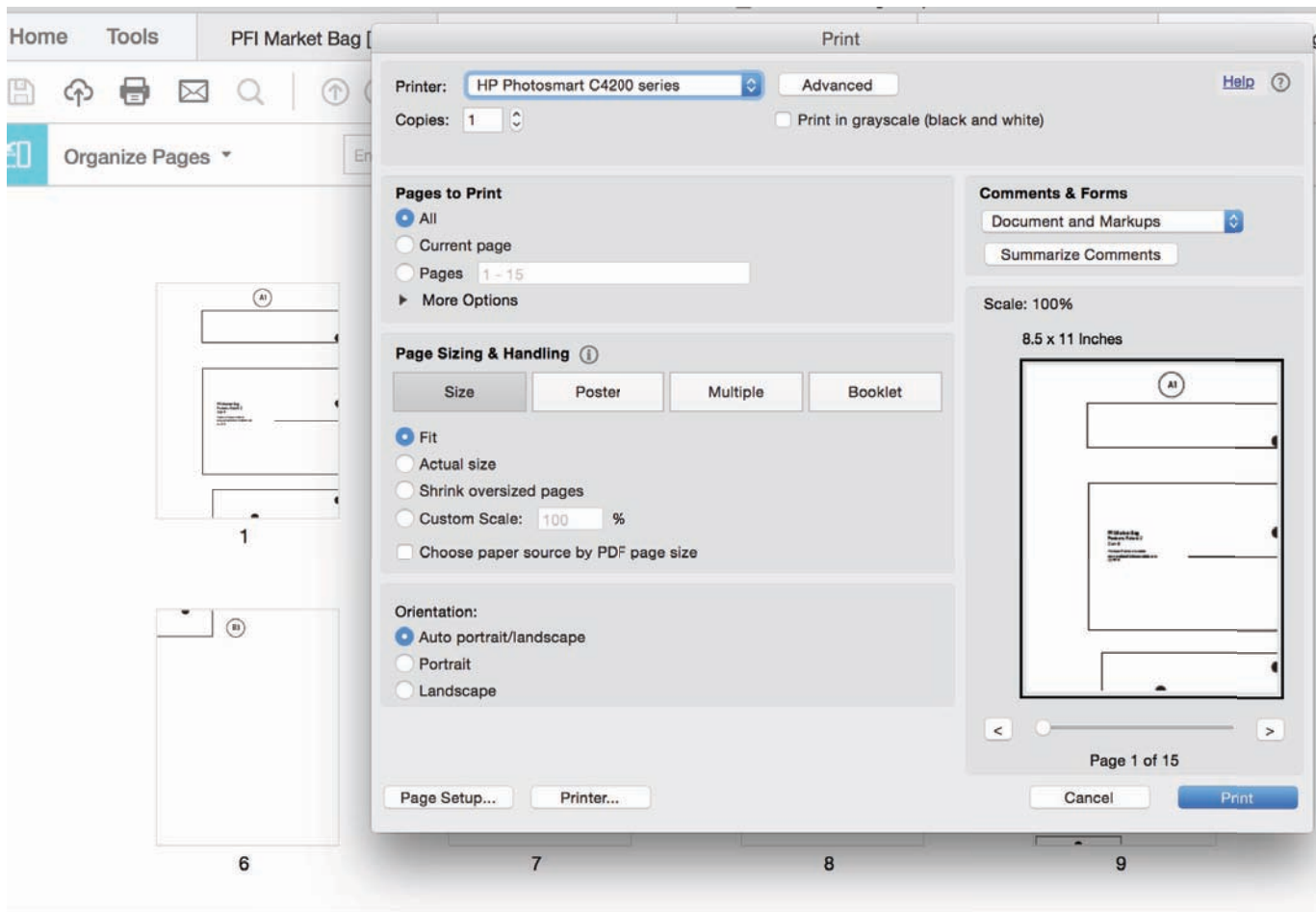


Pattern Printing

These pattern files will be formatted as tiles across a number of printer paper-sized sheets. The PDF will be printed on your home printer and the pages will be taped together to reconstruct the pattern tissue-sized layout.

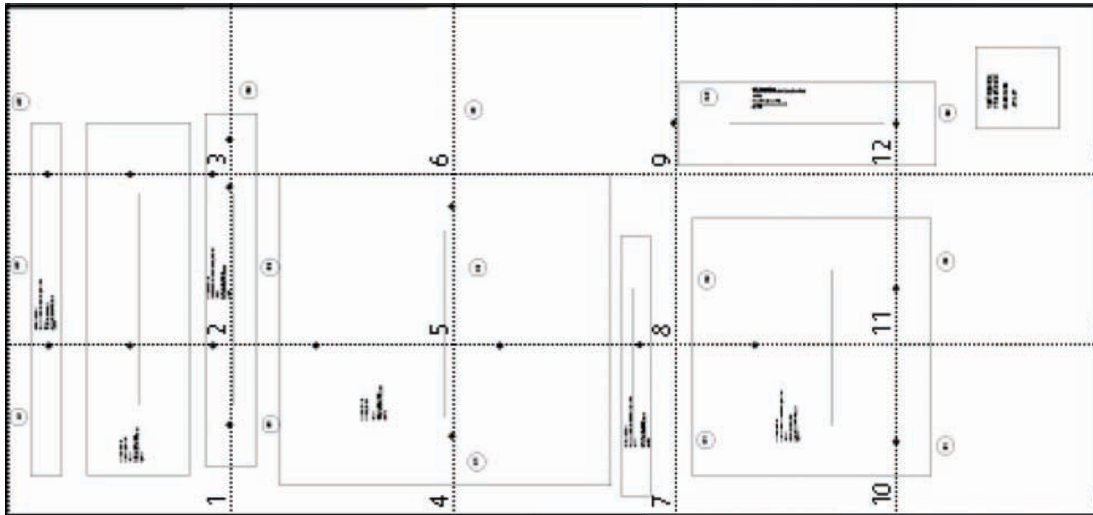
The most important thing about printing a PDF pattern is setting the print scale properly.

- Open the PDF, making sure you are opening the correct one.
- After you choose File>Print and your print dialogue box opens, set the print scale "Scale to Fit".
- Pages to Print select "ALL"



Before printing the entire pattern, locate the page in your pattern that has the test square. Always print this page first on its own to check that you got the 100% scale correct. Measure the test square, and if it does not measure correctly, check your print scaling options.

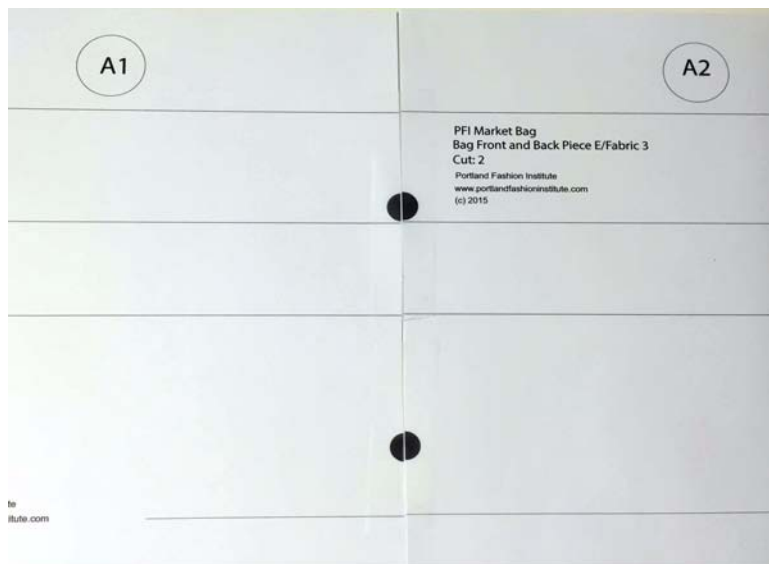
Prepare your Pattern



- Print out the pieces that form your pattern. Look for the 4" by 4" test square and measure it to insure that the pattern has printed correctly.



- Tape the pieces together, matching up the numbers/ letters as shown in the diagram.
- Your pattern will have an alphanumeric marking system to help you figure out which pages should be next to each other. Line up the marks and all pattern lines and use clear tape to tape the pages together. Make sure you are lining up the edges super straight and that the pages are laying flat.



- Cut out your pattern!